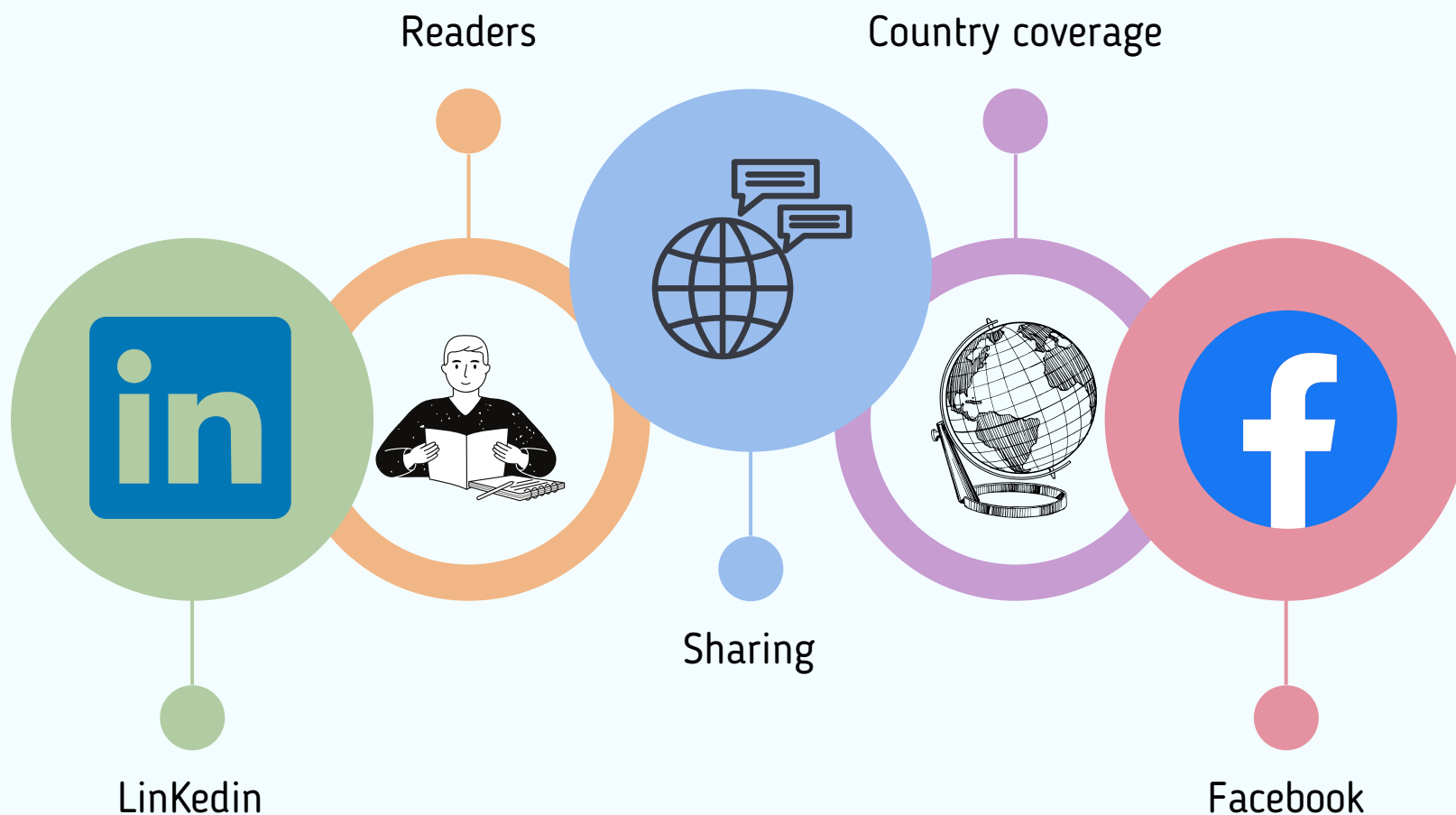


# ***The use and impact of social networks***



# 667

+ Followers

# 67

Articles and  
interviews



Women Visitors

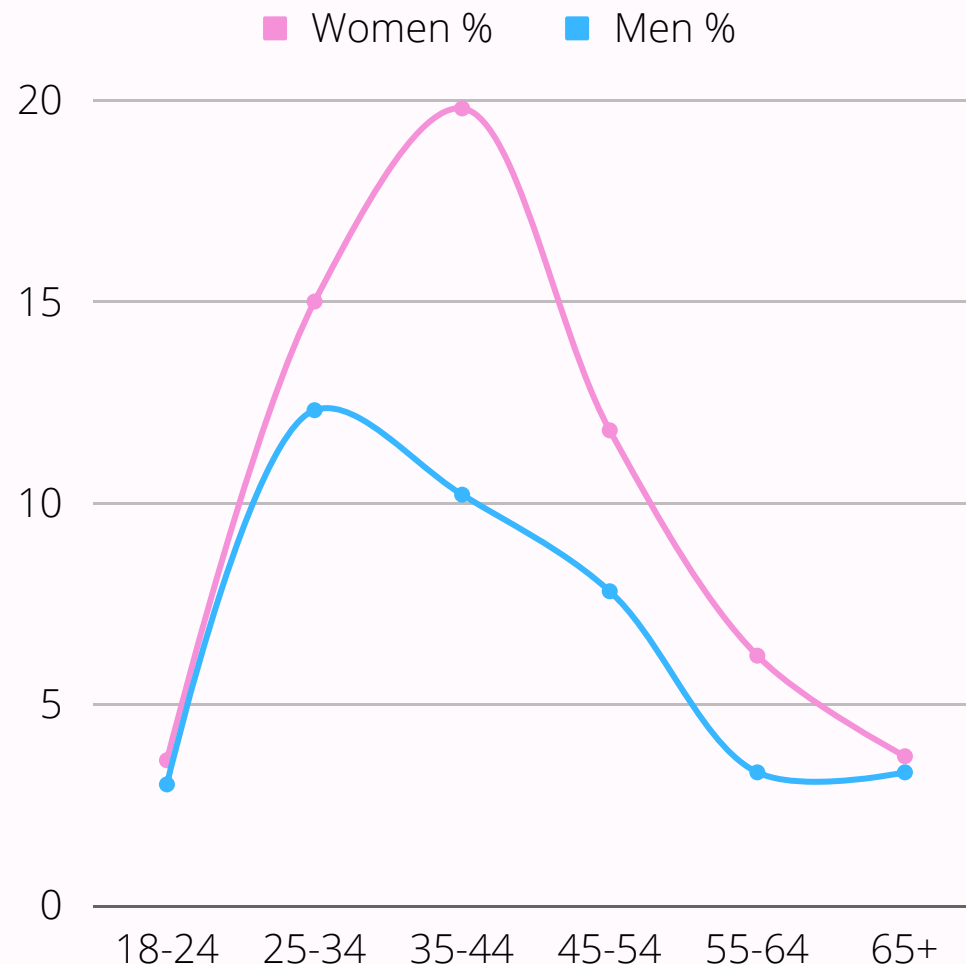
## 60.1%

Men Visitors

## 39.9%

# Followers Facebook page

age and gender



59

 Total  
countries

Continents

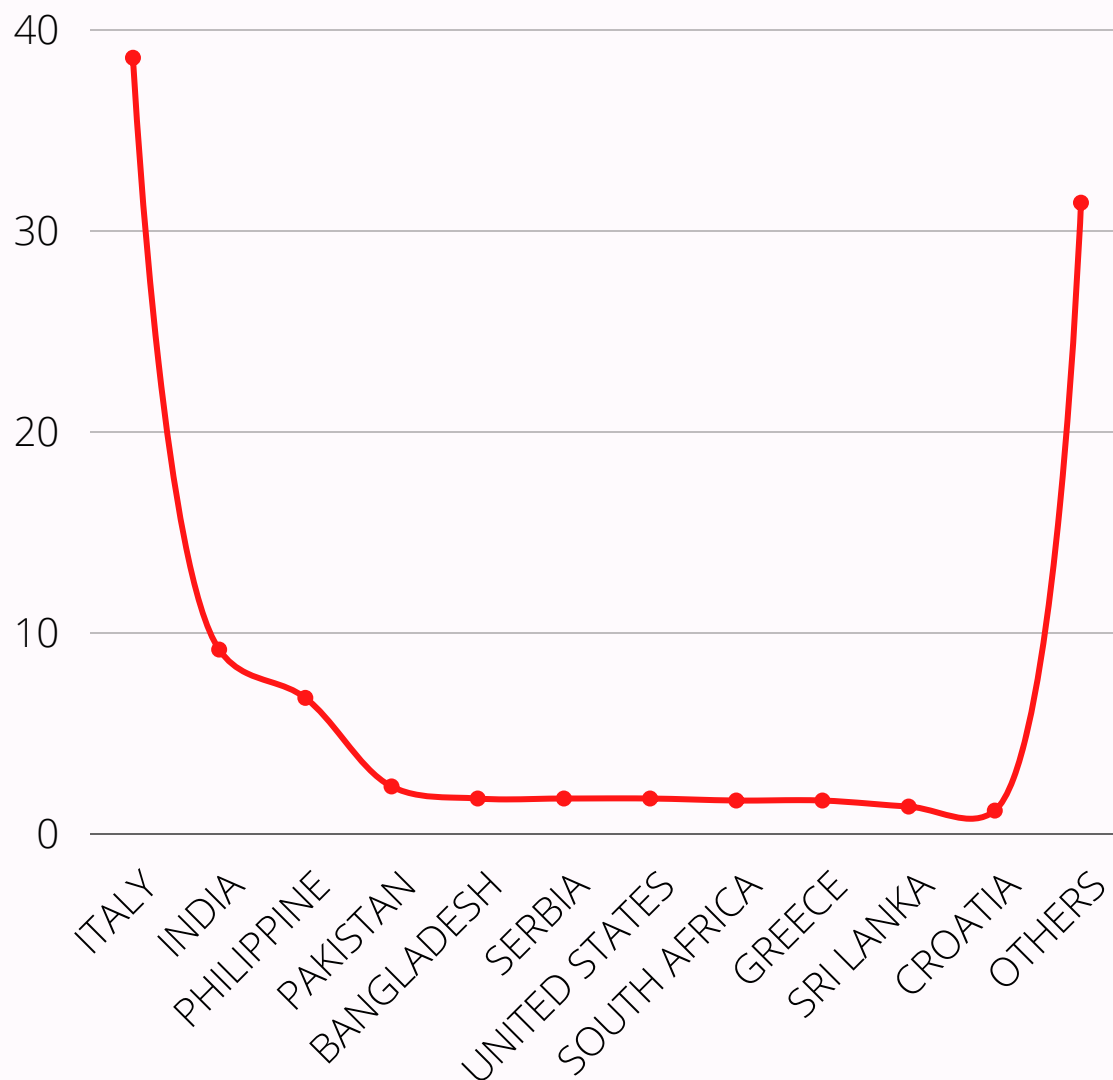
6



# Item coverage. Main countries



■ PERCENTAGE





LAST 90 DAYS



FROM 7 SEPT. 2022

TO 5 DEC. 2022

# PUBLISHED INTERVIEW COVERAGE

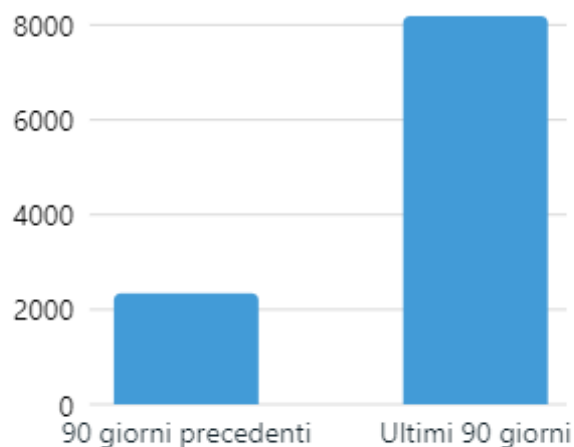


## Copertura

Copertura dei post ⓘ

8188 ↑ 249,8%

Totale degli ultimi 90 giorni rispetto ai 90 giorni precedenti



Copertura mediana dei post per tipo di contenuto multimediale

Per i post creati negli ultimi 90 giorni

Immagini



Link



Video



Audio



Testo



Copertura mediana dei post per formato di contenuto multimediale ⓘ

Per i post creati negli ultimi 90 giorni

Altri post



Post con dirette



Reels



Post dell'album



Post con video a 360°



Post con immagine a 360°





LAST 90 DAYS



FROM 7 SEPT. 2022

TO 5 DEC. 2022

# PUBLISHED INTERVIEW COVERAGE

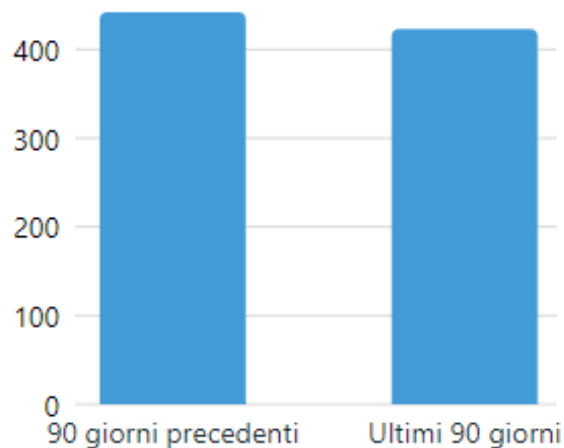


## Interazioni

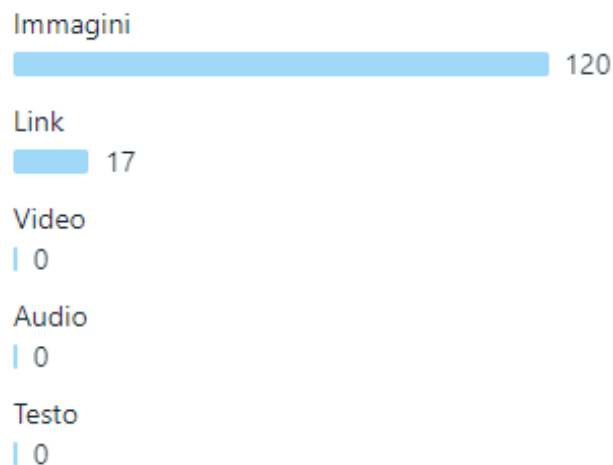
Reazioni, commenti e condivisioni del post ⓘ

423 ↓ 4,3%

Totale degli ultimi 90 giorni rispetto ai 90 giorni precedenti



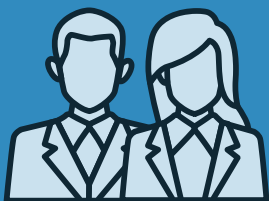
Reazioni, commenti e condivisioni mediani dei post per tipo di contenuto multimediale ⓘ  
Per i post creati negli ultimi 90 giorni



Reazioni, commenti e condivisioni mediani dei post per formato del contenuto ⓘ  
Per i post creati negli ultimi 90 giorni



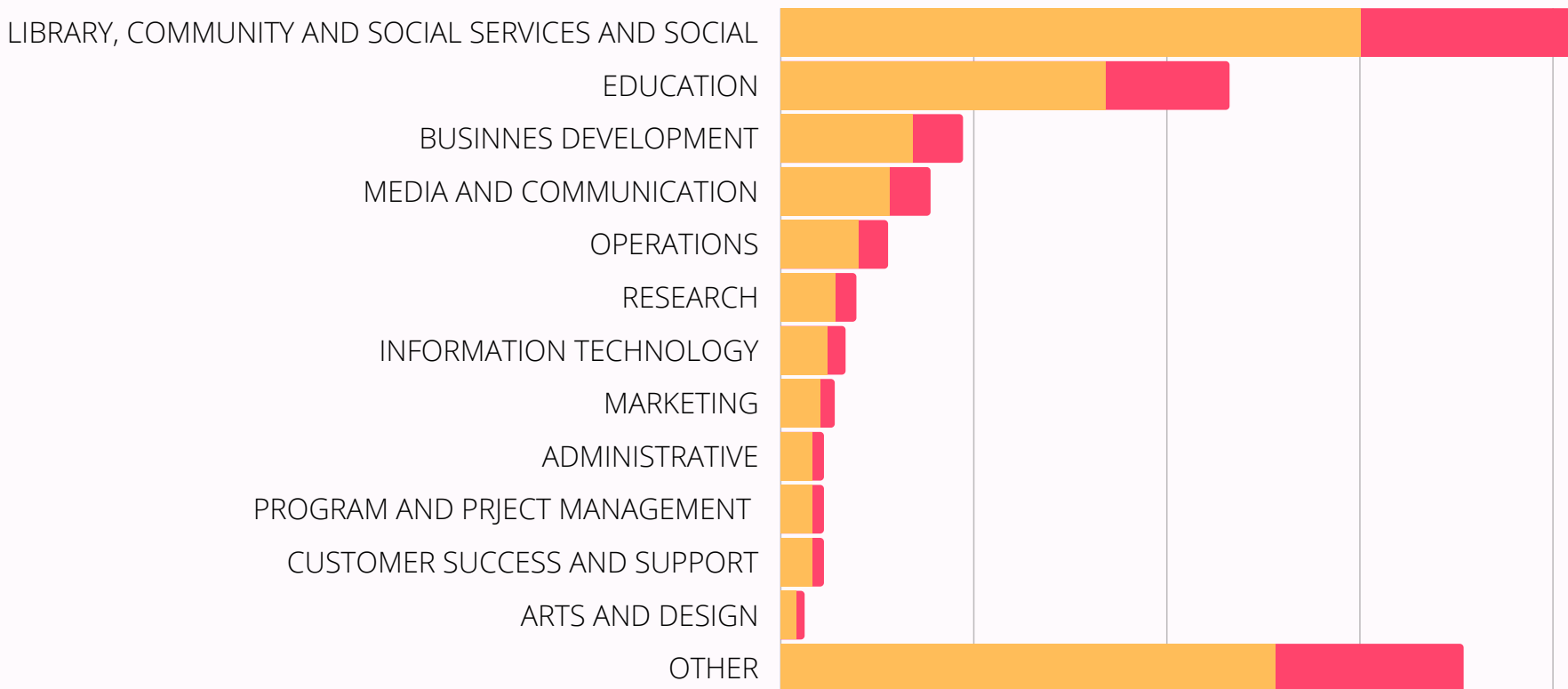
## COVERAGE FOR PROFESSIONAL AREA COVERED



# LINKEDIN. 263 FOLLOWER



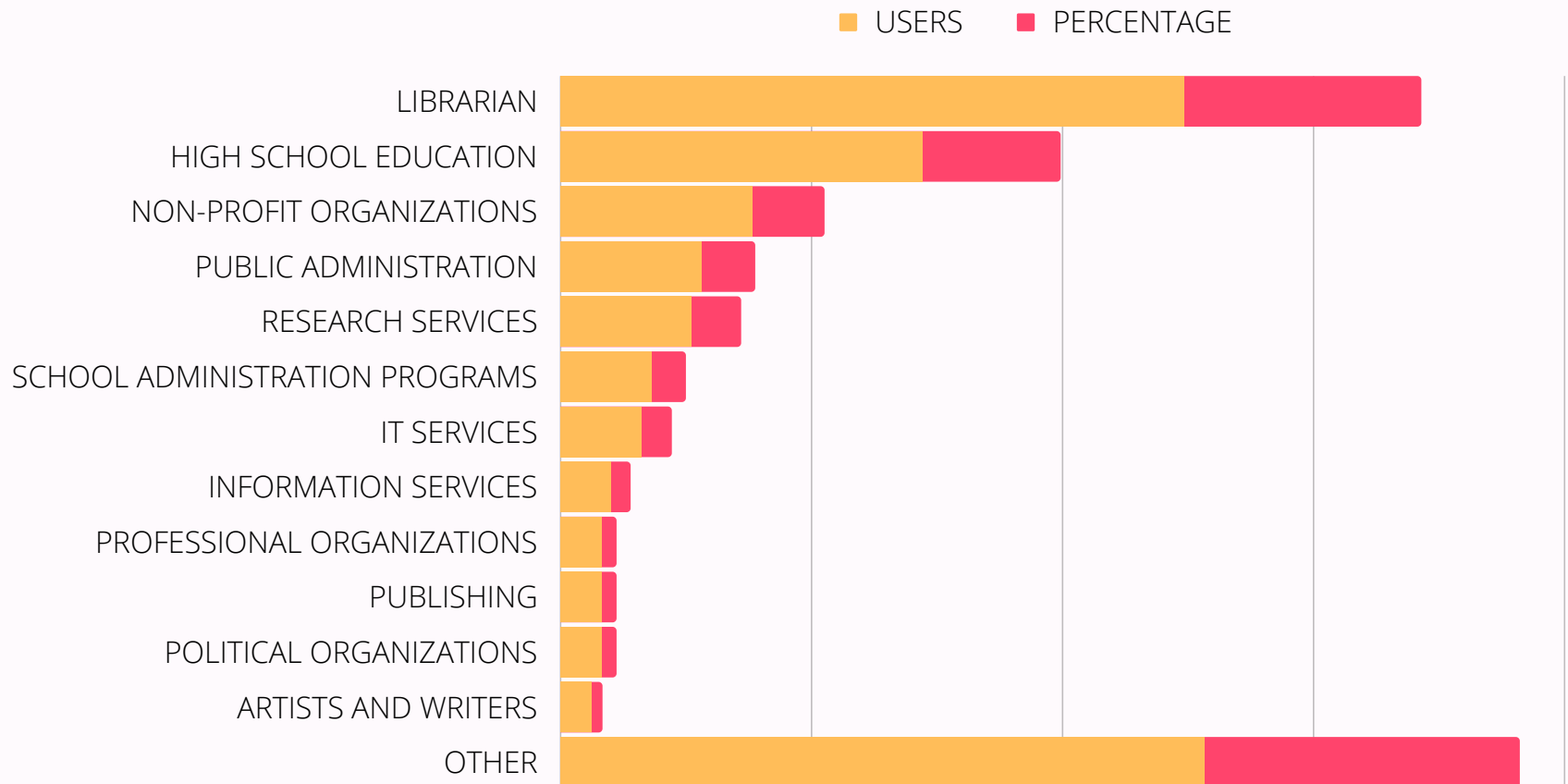
■ USERS ■ PERCENTAGE



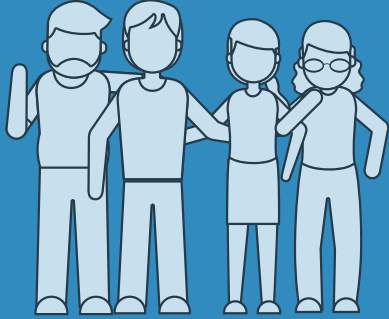
## PROFESSIONAL COVERAGE



# LINKEDIN. 263 FOLLOWER



## LENGTH OF SERVICE COVERAGE



# LINKEDIN. 263 FOLLOWER



USERS PERCENTAGE

